

Smart Watch Phone

User Guide

1. Safety Warning

- ◆ The information in this document won't be modified or extended in accordance with notice.
- ◆ The watch should be charging 2 hours at least before use.
- ◆ The original code is 1122. This code can prevent your watch in using by others without your permission.
- ◆ Please change the original code to insure your personal information use.

2. Product details:

2.1 Product details

Hardware parameters	
CPU	MTK2502
Memory	32GB TF Card
Lcm	1.54" IPS LCD with 240*240 PIXEL
Touch Panel	2.5D with Arc type Capacitive Touch Panel ,and Non-air-gap
Bluetooth	BT4.0
Camera	2.0M
Battery	430mAH Large-capacity lithium polymer batteries
G-sensor	Pedometer, Sedentary remind, Sleep monitor, Anti lost, Remote camera

Feature list

Call functi	GSM/GPRS 850/900/1800/1900
-------------	----------------------------

1

on	Dial, Hands-free calls, Call records and phonebook
	Bluetooth call
SMS	Local SMS
	Through the android \IOS synchronous push messages
APK function	Wallpaper switch
	Dial plate switch
	Theme switch
Recreation	BT Music
Call reminder	Ring tone and Vibration
Dial	Embedded in the six dial
Bright out screen	Bright out screen
Two-way anti lost	Anti lost, Find each other, Compatible with Android and Apple device
Pedometer	Step motion meter、Calorie Counter、mileage record
Sedentary remind	Sedentary remind
Sleep monitor	Sleep quality monitoring
Camera	Traditional photograph, Independently by the watch
	Remote camera, Watch controls the

2

	Android phones taking a picture
Others	Alarm, Calendar, Stopwatch, Calculator ; Compatible with Android and Apple device ; QQ, WeChat, Facebook, Twitter and other real-time information can push to the watch
Remote Notification With Bluetooth	QQ, WeChat, Twitter, Facebook Such as instant messaging, Push SMS Pushing the news, System setting, some Apps notification to watch Remind schedule synchronization Time synchronization

2.2 Products quick into

You can enter into next page by sliding screen to the left, enter option interface by clicking the screen, and return to last page by sliding screen right; It is will be in mistake for a click if drag distance too short.

2.3 Dial setting

APK has built-in six dial, more instructions by the APK application note.

2.4 Dial background setting

APK has built-in more pictures for dial with background, and any picture in your Android, Which can set for the background, more instructions by the APK application note.

2.5 Product theme settings

3

Please read the manual before use.

APK has built-in three themes which can be any combination control, you can select one for theme, more instructions by the APK application note.

2.6 Product theme background settings

APK has built-in more pictures for theme with background, and any picture in your Android, Which can set for the background, more instructions by the APK application note.

3. APK-download, install and quick use:

3.1 Download the Sync software.

Scan QR code, download the APP which can match your android phone. This APP only use for the Sync between watch and phone, will not take your phone GPRS.

If you already download the related software, please check the version and use the latest related software in order to ensure all function normal use. Please update the software when it has new version.

3.2 Install and use the Sync software

Android Application installation:

Please install the android application in your smart phone. You can storage it into your phone memory or install by Sync assistant.

Android application usage (already install)
(Smart phone) Setting -- Accessibility --Enter into Bluetooth notice (service). Enable this service. (Please choose "sure" when shown a warning notice) the application runs on the background automatically and sync function will be switched on as below.

4

Please open the Bluetooth notices in the applications of your smart phone and choose the Notification service, select your Personal or System application.

Telephone service is including SMS, incoming and seek watch.

Notice:

Please don't shut the Bluetooth notify service when you are clearing software by background or close background application software, It will affect the Sync function between watch and phone if shut it.

3.3Bluetooth Connection and Sync function

3.3.1 From phone to watch

Phone setting -- turn on the Bluetooth --search for devices, please click pair devices when found Z60, and also choose "yes" in your mobile phone, paired done.

Please choose "sure" when there is phone book request, meanwhile you'd better choose "no remind again", this is convenience when you connect next time (without remind again).

Notice: The Sync software can open in sync APP already installed and Accessibility, the mobile will show Bluetooth connected done after 2--5min; the watch will inform you the time of Sync with phone, than the Sync switched on. The message will sync to you watch when it incoming to mobile.

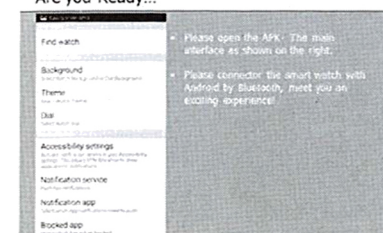
3.3.2 From watch to phone

BT Dialer on Z60- search new device -- fond your smart watch (such as i9500) --connect, the processes of next are same with 3.3.1.

5

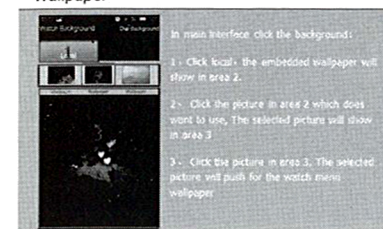
3. 4.1 How to use APK

Are you Ready...



The Powerful Smart Watch APK

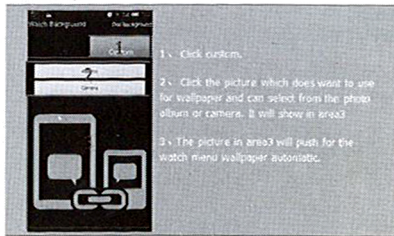
Wallpaper



The Powerful Smart Watch APK

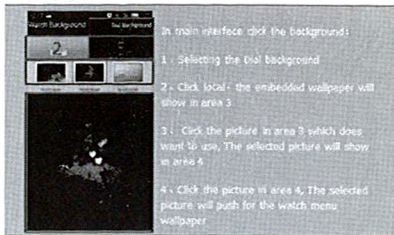
6

Wallpaper



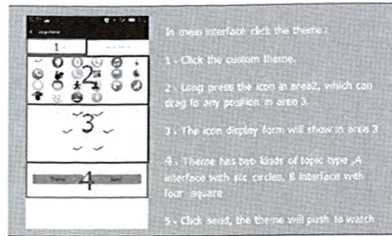
The Powerful SmartWatch APK

Wallpaper



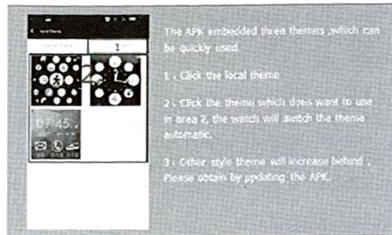
The Powerful SmartWatch APK

Theme



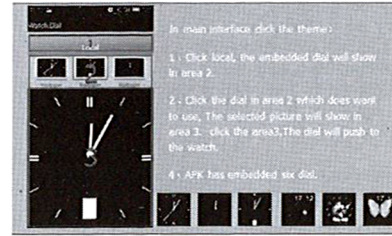
The Powerful SmartWatch APK

Theme



The Powerful SmartWatch APK

Dial



The Powerful SmartWatch APK

3.4.2 How to use the IOS by Apple

- Download lightblue from Apple app store
- Using lightblue connecting with BT4.0
- On the setting menu, open BT and connected with BT3.0

Note: If the connection is apple mobile phone, please open the Setting → Bluetooth, if you have connected with another device has the same name, please ignore this equipment first.

4. Base function:

4.4.1 Message

Sync phone or watch message.

4.4.2 Phonebook

4.4.3 Dialer

4.4.4 Calls records

You can check your phone call records after you connect with the Bluetooth.

Shown all records including miss call, dialed calls and receive call; You can check the date, time and phone number of the miss call after you choose it. But only can call this number.

4.4.5 Bluetooth

Set the Bluetooth status, turn on/off.

4.4.6 BT dialer

Can paired devices with smart watch.

4.4.7 Remote Notification

When there is SMS, incoming message from QQ and applications on the connected phone, the watch phone will alert you to read them.

4.4.8 Remote cameras

Use phone camera take photos, but remote by watch. Its need switch on the camera of phone in advance.

4.4.9 Anti lost

Watch seek phone, or phone seek watch.

4.4.10 Setting

Notice: In the security Settings, the safe code is 1122.

4.4.11 Pedometer

It can be adopted as a tool to avoid insufficient or excessive exercise by measuring calories or calories consumption based on collected data, such as number of steps, distance, time, etc., to control exercise.

If you want return to mail menu but keep pedometer during the exercise, please press the power button.

4.4.12 Sleep monitor

Show your sleep quality base on your sleep times.

4.4.13 Sedentary remind

You can set a time to remind you up to do some exercise, we suggest you this time could be one hours.

4.4.14 Quick response

It can download sync software when scan the quick response, if there is a new version need to update, please contact with our service, our company will provide a new link for your download.

4.4.15 Camera

4.4.16 File manager

4.4.17 Alarm

4.4.18 Calendar

4.4.19 Profiles

4.4.20 Audio player

Can play music from local or smart phone when connects to Bluetooth.

4.4.21 Camera

4.4.22 Image viewer

5. Notice:

5.1 Full charge before use, the charge time needs 1--2 hours.

5.2 Use the accessories cable and charger, or your android phone accessories.

5.3 Bluetooth will disconnect when exceeds the distance, after switch on the Anti lost, the smart search function can't be use before reconnect with Bluetooth.

5.4 Please reconnect with BT if it's disconnected occasionally (please Manual connect if the Bluetooth distance over 5 minutes). Please agree the phone book Sync otherwise there is no called phone book.

5.5 When playing the music, some of music's name can show and some can't, it is normal. Because the android phone have difference sets.

6.Common trouble shooting:

Please refer below key function for any problems with the watch, if the problem still unsolved, please contact our dealer or serviceman appointed.

6.1 Unable to switch on

The time of press the power button too short, please keep it more than 3 seconds.

Low power, please charge it.

6.2 Shut down automatically

Low power, please charge the watch.

6.3 Using time too short

Battery is not full, please make sure it is full power (full charge need 2 hours at least).

During the use of SIM card, the power will be run off soon if the signal too poor.

6.4 Unable to charge

The battery's life will be reduced after few years, please check the battery can normal work.

Change a new charger if it is unworkable.

Please check the USB slot connecting good, if not, please try again.

6.5 No caller' name when incoming call

Forgot to choose upload the phone book when connected with BT, or un-selected keep upload the phone book.

Forgot to sync the phone book when reconnected, please pair the device and connect BT again.

6.6 Bad phone call voice

Watch and phone are separated too far, please close to each other, Bad signal of BT.

Bad signal of your own phone call, please change a better place for phone call.